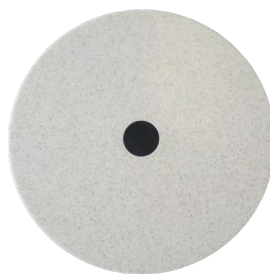


SIDE TABLE. Foot, pillar and fittings in lacquered steel in fine textured finish. Table top in mineral composite, solid wood or stone. Thickness 12mm. Footplate Ø28.

L37
 Table height 48/55
 Table top Ø37/Ø40
 Overall width 37/40
 Footplate Ø28
 Weight, kg 12.9
 Cbm 0.11



Black pepper



Golden Pepper



White pepper



Ash

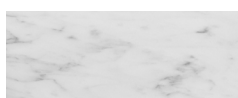


Oak

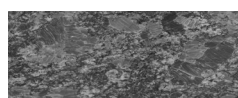


Walnut

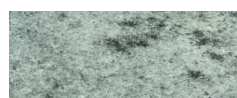
15 | STONE



1. WHITE CARRARA MARBLE



2. STEEL GREY GRANITE



3. GREEN MARIKA VERDE GRANITE



4. RED-BROWN BJÄRLÖV GRANITE